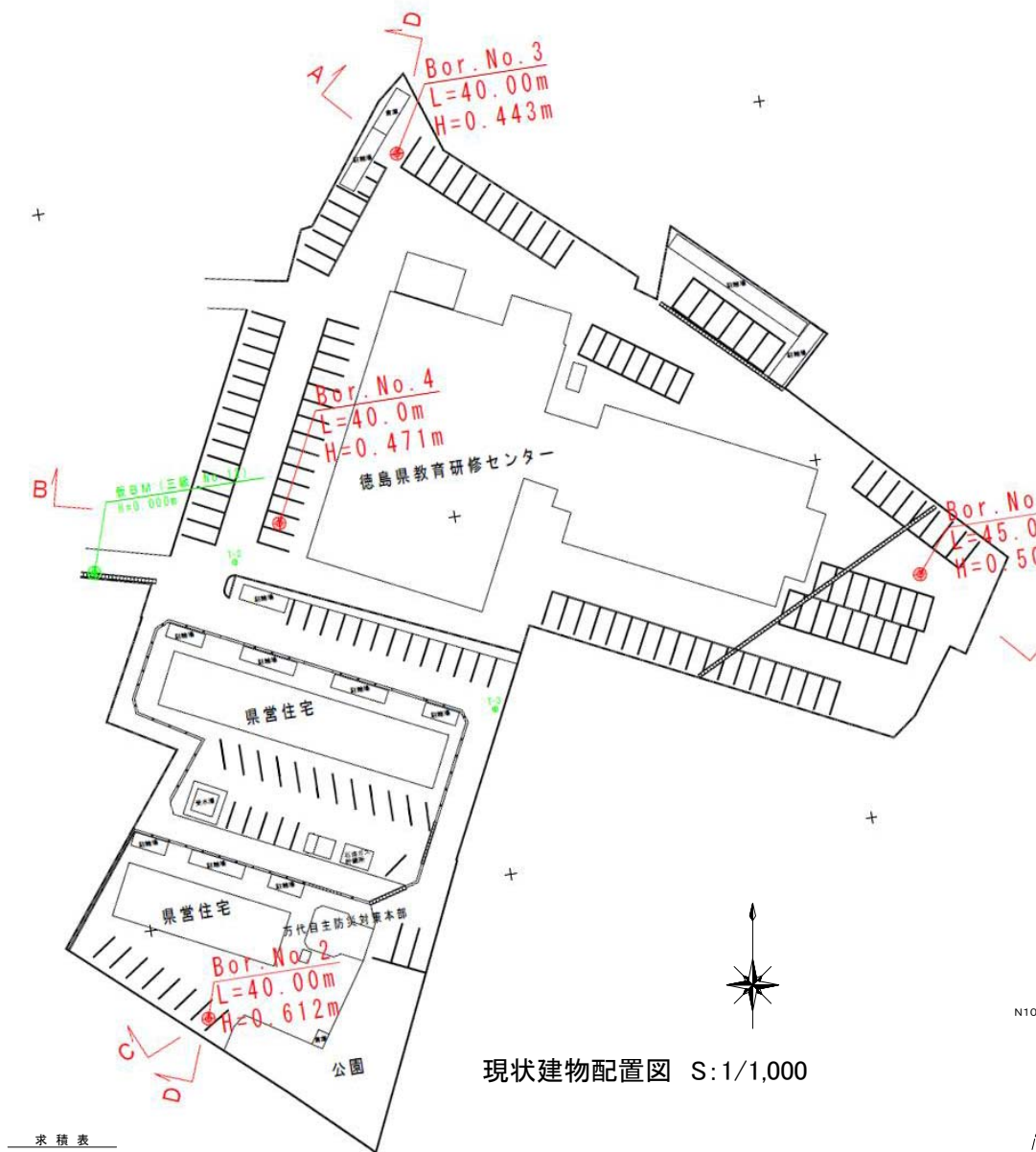
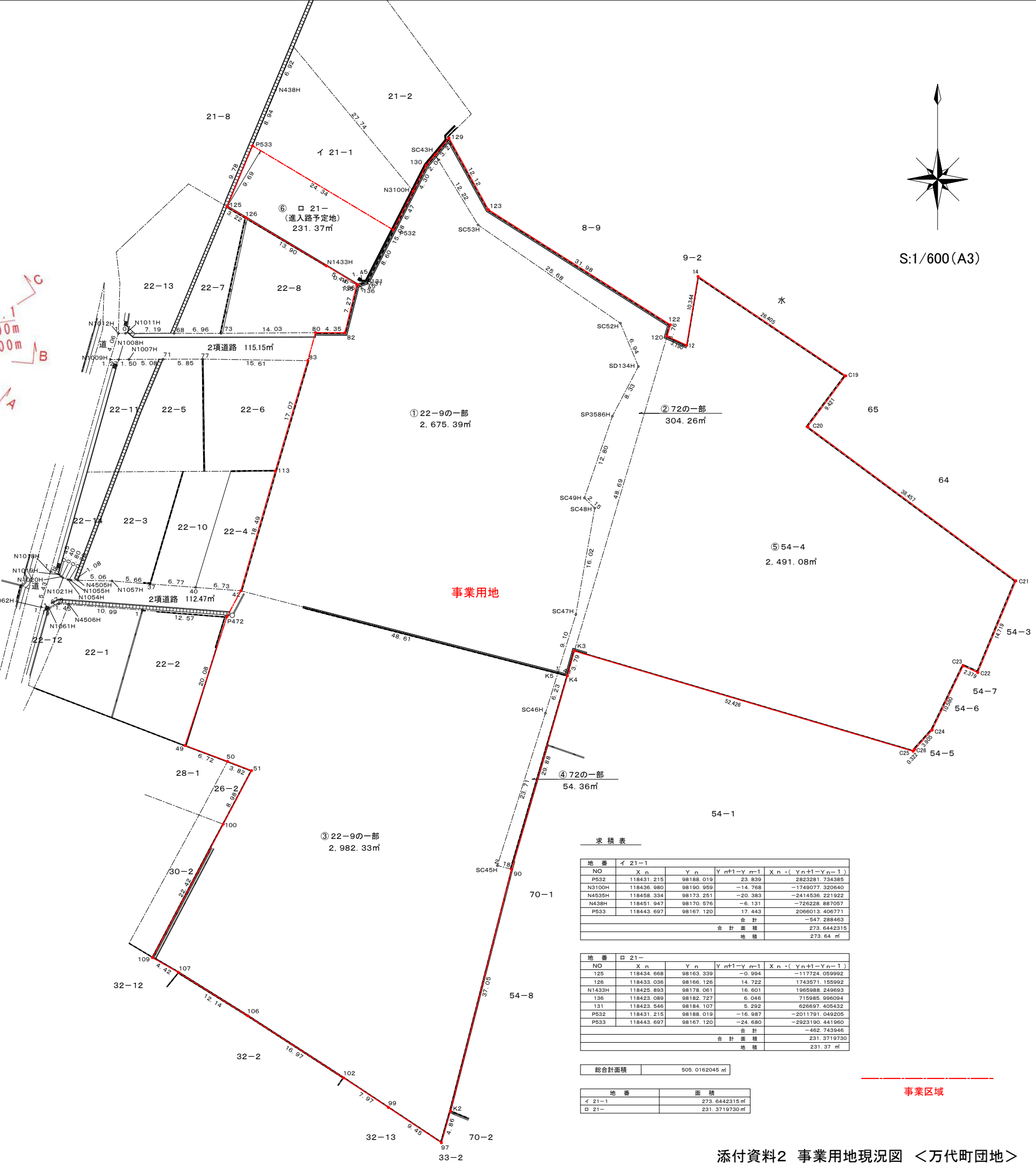


S:1/600(A3)



現状建物配置図 S:1/1,000



事業用地

事業区域

求積表

地番	NO	X _n	Y _n	Y _{n+1}-Y_{n-1}}	X _n ・(Y _{n+1}-Y_{n-1})}
22-9の一部	K5	118395.452	98212.435	49.726	588906.765220
	SC47H	118374.157	98215.119	5.489	649755.747773
	SC48H	118389.935	98217.924	1.269	150236.827515
	SC49H	118391.441	98216.387	2.611	309120.052451
	SP3586H	118403.560	98220.535	8.013	948767.726280
	SD134H	118410.946	98224.400	1.202	142329.957092
	SC52H	118417.363	98221.737	-23.804	-2818806.908852
	SC53H	118431.955	98200.596	-27.524	-3259721.129420
	SC43H	118442.386	98194.213	-7.698	-911769.487428
	130	118440.821	98192.898	-3.254	-385406.431534
	N3100H	118436.980	98190.959	-8.791	-1041179.491180
	131	118423.546	98184.107	-8.232	-974862.630672
	136	118423.089	98182.727	-1.526	-180713.633814
	135	118423.004	98182.581	-1.906	-225714.245624
	82	118415.946	98180.821	-6.117	-724350.341682
	80	118415.967	98176.464	-18.389	-2177551.217163
	73	118415.873	98162.432	-20.999	-2486614.917127
	68	118415.878	98155.465	-14.162	-1677005.664236
	N1011H	118415.985	98148.270	-8.274	-979773.032490
	N1012H	118415.859	98147.191	-2.279	-269859.742651
	N1009H	118411.980	98145.991	0.071	8407.250580
	N1008H	118411.993	98147.262	2.777	328830.104561
	N1007H	118412.000	98148.768	6.588	780098.256000
	71	118412.025	98153.850	10.940	1295427.553500
	77	118412.040	98159.708	21.469	2542188.086760
	83	118411.815	98175.319	10.790	1277663.483850
	113	118395.438	98170.498	-9.936	-1176377.071968
	42	118377.663	98165.383	41.937	4964404.053231
	合計				-5591.091038
	合計面積				2790.545190
	地積				2790.54 ㎡

地番	NO	X _n	Y _n	Y _{n+1}-Y_{n-1}}	X _n ・(Y _{n+1}-Y_{n-1})}
22-9の一部	90	118336.363	98205.586	6.963	823976.095969
	SC45H	118336.884	98203.461	5.013	593222.799492
	SC46H	118359.497	98210.599	8.974	1062158.126078
	K5	118365.452	98212.435	-45.216	-5352012.277632
	42	118377.663	98165.383	-53.770	-6365166.939510
	40	118378.172	98158.665	-13.473	-1594909.113356
	37	118378.681	98151.910	-12.405	-1468487.537805
	N1007H	118379.126	98146.260	-10.717	-1268669.093342
	N4505H	118379.225	98141.193	-6.148	-727795.475300
	N1055H	118379.251	98140.112	-1.471	-174135.878221
	N1054H	118379.320	98139.722	-1.145	-135544.321400
	N1021H	118379.591	98138.967	-1.091	-129152.133781
	N1020H	118379.614	98138.631	-0.637	-75407.941518
	N1019H	118380.154	98138.330	-1.515	-179345.933310
	N1018H	118380.516	98137.116	-2.624	-310630.473984
	N1062H	118375.263	98135.706	-0.250	-29593.815750
	N1061H	118374.966	98136.866	2.646	313220.160036
	6	118375.733	98138.352	2.938	347787.903954
	N4506H	118375.622	98139.804	12.413	1469396.595986
	1	118374.798	98150.765	23.499	2781689.378202
	P472	118373.809	98163.303	6.333	749661.332397
	49	118354.708	98157.098	0.099	11717.116092
	50	118352.358	98163.402	9.872	1168374.478176
	51	118350.979	98166.970	-0.634	-75034.520686
	100	118343.037	98162.768	-14.727	-1742837.905899
	109	118323.230	98152.243	-6.677	-790044.206710
	107	118321.051	98156.091	14.143	1673414.624293
	106	118314.614	98166.385	24.543	2905795.571402
	102	118305.391	98180.634	20.897	2472227.755727
	99	118300.994	98187.283	14.521	1717848.733874
	97	118295.760	98195.155	9.215	1090095.428400
	K2	118300.437	98196.498	10.431	1233991.858347
	合計				-6189.606679
	合計面積				3094.8043395
	地積				3094.80 ㎡

地番	NO	X _n	Y _n	Y _{n+1}-Y_{n-1}}	X _n ・(Y _{n+1}-Y_{n-1})}
72の一部	K5	118365.452	98212.435	3.272	387291.758944
	K4	118365.079	98213.871	-6.849	-810682.426071
	90	118336.363	98205.586	-10.410	-1231881.538830
	SC45H	118336.884	98203.461	5.013	593222.799492
	SC46H	118359.497	98210.599	8.974	1062158.126078
	合計				108.719613
	合計面積				54.3598065
	地積				54.35 ㎡

地番	面積
22-9の一部	2975.39 ㎡
72の一部	304.26 ㎡
22-9の一部	2982.33 ㎡
72の一部	54.36 ㎡
54-4	2491.08 ㎡
21-1	231.37 ㎡
事業区域面積	8738.79 ㎡

求積表

地番	NO	X _n	Y _n	Y _{n+1}-Y_{n-1}}	X _n ・(Y _{n+1}-Y_{n-1})}
21-1	P532	118431.215	98188.019	23.839	2823281.734885
	N3100H	118436.980	98190.959	-14.768	-1749077.320640
	N4535H	118458.334	98173.251	-20.383	-2414536.221922
	N438H	118451.947	98170.576	-6.131	-726228.887057
	P533	118443.697	98167.120	17.443	2066013.406771
	合計				-547.288463
	合計面積				273.6442315
	地積				273.64 ㎡

地番	NO	X _n	Y _n	Y _{n+1}-Y_{n-1}}	X _n ・(Y _{n+1}-Y_{n-1})}
21-	125	118434.668	98163.339	-0.994	-117724.059992
	126	118433.036	98166.126	14.722	1743571.155992
	N1433H	118425.893	98178.061	16.801	1965988.249693
	136	118423.089	98182.727	6.046	715985.996094
	131	118423.546	98184.107	5.292	626697.405432
	P532	118431.215	98188.019	-16.987	-2011791.049205
	P533	118443.697	98167.120	-24.680	-2923190.441960
	合計				-462.743946
	合計面積				231.3719730
	地積				231.37 ㎡

合計面積	505.0162045 ㎡
------	---------------

地番	面積
21-1	273.6442315 ㎡
21-	231.3719730 ㎡

