

平成 11 年度酸性雨調査結果

| 調査地点 | 項目 \ 月 | 4月 | 5月 | 6月 | 7月 | 8月 | 9月 | 10月 | 11月 | 12月 | 1月 | 2月 | 3月 | 年間平均 |
|---|--|--------|-------|--------|--------|-------|--------|-------|-------|-------|-------|-------|-------|-------|
| 徳島市 徳島保健所 | 降水量 (mm) | 130.9 | 102.5 | 258.6 | 149.4 | 212.4 | 229.9 | 64.3 | 154.6 | 1.6 | 74.2 | 11.6 | 80.3 | 122.5 |
| | EC ($\mu\text{S}/\text{cm}$) | 31.4 | 30.1 | 9.2 | 33.2 | 14.8 | 20.0 | 19.4 | 13.2 | 65.9 | 22.1 | 51.1 | 34.5 | 20.9 |
| | pH (-) | 5.2 | 5.8 | 5.0 | 4.4 | 4.8 | 4.6 | 4.8 | 5.0 | 5.4 | 5.1 | 5.0 | 5.0 | 4.8 |
| | Cl ⁻ (mg/m ³) | 911.1 | 657.9 | 134.5 | 86.3 | 371.0 | 939.0 | 113.4 | 210.9 | 9.9 | 111.6 | 34.5 | 202.0 | 403.9 |
| | NO ₃ ⁻ (mg/m ³) | 141.4 | 131.0 | 206.1 | 239.5 | 197.8 | 193.5 | 147.6 | 199.9 | 12.7 | 160.0 | 68.3 | 219.7 | 189.2 |
| | SO ₄ ²⁻ (mg/m ³) | 311.2 | 257.6 | 227.7 | 416.8 | 282.8 | 384.0 | 143.1 | 213.2 | 12.9 | 241.6 | 87.1 | 310.1 | 287.5 |
| | Na ⁺ (mg/m ³) | 508.7 | 430.0 | 54.6 | 30.4 | 215.3 | 499.1 | 72.0 | 118.8 | 5.6 | 80.1 | 29.1 | 109.3 | 223.0 |
| | NH ₄ ⁺ (mg/m ³) | 54.2 | 47.7 | 55.0 | 67.7 | 55.7 | 61.1 | 46.1 | 61.9 | 5.4 | 96.7 | 30.7 | 117.0 | 62.4 |
| | K ⁺ (mg/m ³) | 25.6 | 25.3 | 20.5 | 12.0 | 13.9 | 27.7 | 9.5 | 15.7 | 3.0 | 9.7 | 5.7 | 37.3 | 19.9 |
| | Mg ²⁺ (mg/m ³) | 71.4 | 51.6 | 16.2 | 10.2 | 32.3 | 65.7 | 12.2 | 18.9 | 3.2 | 13.7 | 6.0 | 25.7 | 33.4 |
| | Ca ²⁺ (mg/m ³) | 92.0 | 76.4 | 74.8 | 54.4 | 57.1 | 71.0 | 37.4 | 39.7 | 11.4 | 56.6 | 26.2 | 84.9 | 65.1 |
| | NSS - SO ₄ ²⁻ (mg/m ³) | 184.0 | 150.5 | 214.4 | 409.6 | 229.2 | 259.4 | 125.2 | 183.5 | 11.6 | 221.7 | 80.2 | 283.5 | 232.0 |
| NSS - Ca ²⁺ (mg/m ³) | 72.7 | 60.0 | 72.7 | 53.2 | 48.9 | 52.0 | 34.7 | 35.2 | 11.2 | 53.5 | 25.1 | 80.8 | 56.6 | |
| 石井町 農業大学校 | 降水量 (mm) | 186.6 | 64.3 | 151.9 | 159.2 | 147.5 | 271.3 | 81.5 | 63.0 | 2.3 | 77.7 | 16.8 | 62.4 | 107.1 |
| | EC ($\mu\text{S}/\text{cm}$) | 15.0 | 40.0 | 16.2 | 27.1 | 22.0 | 13.9 | 17.8 | 15.2 | 47.1 | 20.6 | 57.3 | 29.9 | 20.3 |
| | pH (-) | 5.1 | 6.4 | 5.9 | 4.5 | 4.6 | 5.0 | 4.7 | 5.2 | 5.7 | 5.0 | 5.1 | 5.3 | 4.9 |
| | Cl ⁻ (mg/m ³) | 373.2 | 321.7 | 223.5 | 531.2 | 364.4 | 626.4 | 113.6 | 103.9 | 11.8 | 117.6 | 79.4 | 89.7 | 361.6 |
| | NO ₃ ⁻ (mg/m ³) | 310.3 | 119.8 | 223.9 | 213.3 | 186.5 | 169.0 | 195.5 | 124.5 | 13.9 | 177.7 | 136.1 | 200.7 | 201.9 |
| | SO ₄ ²⁻ (mg/m ³) | 348.2 | 185.9 | 157.0 | 387.9 | 232.4 | 256.3 | 122.5 | 83.2 | 9.3 | 194.9 | 108.2 | 224.5 | 243.3 |
| | Na ⁺ (mg/m ³) | 222.0 | 221.0 | 134.9 | 308.3 | 206.0 | 324.6 | 56.0 | 35.6 | 7.4 | 62.8 | 54.9 | 58.5 | 202.4 |
| | NH ₄ ⁺ (mg/m ³) | 164.0 | 151.3 | 87.5 | 79.4 | 49.3 | 20.0 | 65.2 | 56.1 | 6.9 | 98.0 | 50.6 | 121.1 | 80.8 |
| | K ⁺ (mg/m ³) | 35.0 | 71.2 | 30.8 | 19.5 | 17.7 | 22.2 | 10.1 | 32.2 | 4.4 | 7.2 | 20.2 | 28.5 | 25.7 |
| | Mg ²⁺ (mg/m ³) | 37.8 | 36.4 | 30.4 | 43.8 | 32.2 | 48.6 | 13.3 | 8.1 | 2.2 | 10.2 | 16.0 | 22.5 | 33.5 |
| | Ca ²⁺ (mg/m ³) | 85.5 | 62.6 | 172.7 | 51.7 | 46.9 | 258.7 | 30.9 | 23.7 | 4.9 | 37.6 | 33.3 | 79.8 | 112.1 |
| | NSS - SO ₄ ²⁻ (mg/m ³) | 293.3 | 131.6 | 123.5 | 311.0 | 181.2 | 175.3 | 108.5 | 74.4 | 7.7 | 179.3 | 95.3 | 210.7 | 193.1 |
| NSS - Ca ²⁺ (mg/m ³) | 77.1 | 54.2 | 167.6 | 40.0 | 39.1 | 246.4 | 28.8 | 22.4 | 4.6 | 35.2 | 31.2 | 77.6 | 104.4 | |
| 鷺敷町 鷺敷中学校 | 降水量 (mm) | 273.6 | 224.2 | 633.8 | 437.6 | 422.3 | 504.1 | 137.6 | 340.1 | 39.5 | 116.4 | 39.4 | 165.6 | 277.8 |
| | EC ($\mu\text{S}/\text{cm}$) | 19.5 | 17.6 | 7.8 | 14.9 | 12.3 | 17.3 | 12.0 | 7.9 | 21.7 | 15.7 | 23.0 | 20.3 | 13.8 |
| | pH (-) | 5.2 | 5.7 | 4.9 | 5.6 | 4.9 | 5.2 | 5.1 | 5.3 | 4.9 | 4.8 | 4.7 | 5.5 | 5.1 |
| | Cl ⁻ (mg/m ³) | 1016.3 | 811.3 | 408.7 | 1165.1 | 853.4 | 1592.8 | 195.1 | 563.3 | 75.9 | 164.5 | 53.3 | 248.5 | 802.6 |
| | NO ₃ ⁻ (mg/m ³) | 199.4 | 173.7 | 1006.9 | 71.0 | 207.3 | 395.9 | 163.3 | 213.2 | 25.2 | 131.8 | 115.0 | 200.5 | 359.6 |
| | SO ₄ ²⁻ (mg/m ³) | 399.0 | 334.7 | 646.9 | 307.2 | 315.9 | 559.3 | 172.5 | 230.7 | 109.1 | 177.2 | 105.4 | 307.3 | 397.8 |
| | Na ⁺ (mg/m ³) | 585.6 | 458.4 | 204.3 | 658.9 | 474.1 | 887.1 | 106.5 | 189.8 | 40.3 | 98.9 | 29.8 | 153.5 | 434.0 |
| | NH ₄ ⁺ (mg/m ³) | 60.0 | 44.9 | 163.8 | 9.9 | 3.5 | 45.9 | 7.2 | 39.6 | 14.8 | 14.4 | 30.4 | 23.4 | 54.3 |
| | K ⁺ (mg/m ³) | 37.2 | 34.2 | 11.5 | 28.4 | 22.5 | 57.7 | 10.0 | 23.8 | 6.5 | 7.9 | 4.8 | 35.8 | 27.9 |
| | Mg ²⁺ (mg/m ³) | 88.8 | 67.2 | 50.7 | 89.4 | 70.9 | 134.5 | 18.2 | 30.7 | 11.6 | 14.9 | 7.0 | 32.4 | 68.7 |
| | Ca ²⁺ (mg/m ³) | 140.9 | 165.1 | 369.7 | 148.0 | 113.2 | 621.3 | 89.3 | 72.5 | 49.9 | 42.6 | 41.5 | 146.0 | 241.6 |
| | NSS - SO ₄ ²⁻ (mg/m ³) | 252.3 | 219.8 | 596.1 | 142.3 | 197.3 | 337.3 | 145.8 | 183.2 | 99.0 | 152.4 | 98.2 | 269.3 | 289.2 |
| NSS - Ca ²⁺ (mg/m ³) | 118.6 | 147.6 | 362.0 | 123.0 | 95.2 | 587.6 | 85.2 | 65.3 | 48.4 | 38.9 | 40.3 | 140.1 | 225.1 | |
| 阿南市 阿南保健所 | 降水量 (mm) | 125.2 | 74.5 | 454.8 | 119.7 | 261.8 | 434.1 | 135.0 | 246.5 | 15.8 | 52.9 | 41.7 | 136.0 | 174.8 |
| | EC ($\mu\text{S}/\text{cm}$) | 37.5 | 39.4 | 14.7 | 37.4 | 15.7 | 18.3 | 26.3 | 14.8 | 64.1 | 25.0 | 45.4 | 32.3 | 22.2 |
| | pH (-) | 4.8 | 5.2 | 4.7 | 4.4 | 4.8 | 4.8 | 4.8 | 4.9 | 5.1 | 5.1 | 4.7 | 5.0 | 4.8 |
| | Cl ⁻ (mg/m ³) | 934.1 | 612.8 | 634.8 | 622.2 | 449.0 | 1508.8 | 616.3 | 614.6 | 101.1 | 108.2 | 125.0 | 469.8 | 767.1 |
| | NO ₃ ⁻ (mg/m ³) | 211.8 | 130.9 | 372.0 | 182.9 | 193.0 | 291.7 | 350.6 | 293.2 | 113.3 | 140.8 | 242.1 | 267.3 | 276.3 |
| | SO ₄ ²⁻ (mg/m ³) | 387.5 | 262.2 | 648.6 | 474.0 | 340.9 | 527.3 | 297.6 | 311.6 | 130.3 | 160.1 | 213.8 | 398.8 | 442.6 |
| | Na ⁺ (mg/m ³) | 505.7 | 347.2 | 357.3 | 378.5 | 252.8 | 845.7 | 270.4 | 234.6 | 48.2 | 78.7 | 68.2 | 272.7 | 414.4 |
| | NH ₄ ⁺ (mg/m ³) | 92.6 | 48.0 | 130.7 | 70.4 | 54.2 | 83.6 | 125.0 | 116.6 | 61.9 | 80.0 | 108.6 | 147.5 | 99.6 |
| | K ⁺ (mg/m ³) | 26.3 | 20.4 | 38.4 | 18.4 | 24.0 | 50.8 | 16.7 | 21.2 | 12.1 | 6.8 | 10.7 | 21.3 | 30.6 |
| | Mg ²⁺ (mg/m ³) | 70.7 | 44.7 | 58.4 | 44.9 | 35.4 | 120.7 | 36.0 | 33.4 | 10.3 | 9.0 | 9.6 | 40.6 | 59.8 |
| | Ca ²⁺ (mg/m ³) | 74.2 | 55.3 | 98.6 | 46.1 | 50.4 | 97.6 | 57.1 | 39.2 | 30.1 | 25.4 | 30.1 | 92.2 | 72.6 |
| | NSS - SO ₄ ²⁻ (mg/m ³) | 260.9 | 175.2 | 559.3 | 379.3 | 277.8 | 316.0 | 229.9 | 252.8 | 118.2 | 140.4 | 197.0 | 330.8 | 339.0 |
| NSS - Ca ²⁺ (mg/m ³) | 55.0 | 42.2 | 85.0 | 31.8 | 40.8 | 65.5 | 46.9 | 30.3 | 28.2 | 22.4 | 27.5 | 81.9 | 56.9 | |

平成12年度酸性雨調査結果

| 調査地点 | 項目 \ 月 | 4月 | 5月 | 6月 | 7月 | 8月 | 9月 | 10月 | 11月 | 12月 | 1月 | 2月 | 3月 | 年間平均 |
|--|--|-------|-------|-------|--------|-------|-------|-------|-------|-------|-------|-------|-------|-------|
| 徳島市 徳島保健所 | 降水量 (mm) | 53.7 | 100.6 | 124.4 | 56.9 | 47.3 | 280.9 | 162.4 | 37.1 | 20.4 | 96.2 | 7.7 | 26.8 | 84.5 |
| | EC ($\mu\text{S}/\text{cm}$) | 32.2 | 23.6 | 15.3 | 64.4 | 26.4 | 10.5 | 21.0 | 45.7 | 41.5 | 26.2 | 50.9 | 55.3 | 23.9 |
| | pH (-) | 5.1 | 5.4 | 4.6 | 4.4 | 4.5 | 5.1 | 5.1 | 4.2 | 5.1 | 4.7 | 5.0 | 5.8 | 4.8 |
| | Cl ⁻ (mg/m ^l) | 78.7 | 153.0 | 56.8 | 788.1 | 981.9 | 243.1 | 215.8 | 115.1 | 350.4 | 125.6 | 11.1 | 103.4 | 244.1 |
| | NO ₃ ⁻ (mg/m ^l) | 168.9 | 133.1 | 125.0 | 177.9 | 140.6 | 616.1 | 191.4 | 151.4 | 137.5 | 178.3 | 42.2 | 126.6 | 284.1 |
| | SO ₄ ²⁻ (mg/m ^l) | 240.1 | 116.2 | 144.7 | 430.8 | 407.0 | 224.3 | 351.3 | 201.9 | 171.2 | 268.5 | 60.9 | 195.7 | 245.4 |
| | Na ⁺ (mg/m ^l) | 70.0 | 27.9 | 18.5 | 437.1 | 804.6 | 280.2 | 166.6 | 81.5 | 183.8 | 97.3 | 9.8 | 54.6 | 192.5 |
| | NH ₄ ⁺ (mg/m ^l) | 86.5 | 41.0 | 34.1 | 93.6 | 143.1 | 109.8 | 157.7 | 85.4 | 76.7 | 125.3 | 18.9 | 57.6 | 98.6 |
| | K ⁺ (mg/m ^l) | 14.7 | 47.0 | 34.5 | 36.6 | 83.0 | 64.7 | 44.5 | 22.6 | 19.5 | 21.0 | 4.9 | 32.0 | 44.7 |
| | Mg ²⁺ (mg/m ^l) | 17.5 | 49.9 | 13.2 | 43.5 | 67.0 | 30.2 | 19.1 | 10.6 | 23.2 | 19.8 | 3.1 | 20.6 | 27.8 |
| | Ca ²⁺ (mg/m ^l) | 79.7 | 37.1 | 9.4 | 67.2 | 88.4 | 72.5 | 45.4 | 36.3 | 55.0 | 93.0 | 18.6 | 90.8 | 58.1 |
| NSS - SO ₄ ²⁻ (mg/m ^l) | 223.8 | 110.3 | 141.4 | 323.9 | 208.3 | 155.7 | 310.8 | 182.1 | 129.5 | 245.5 | 59.0 | 182.5 | 198.7 | |
| NSS - Ca ²⁺ (mg/m ^l) | 77.1 | 36.1 | 8.7 | 50.6 | 57.8 | 61.9 | 39.1 | 33.2 | 48.1 | 89.3 | 18.3 | 88.8 | 50.8 | |
| 石井町 農業大学校 | 降水量 (mm) | 54.1 | 72.5 | 86.3 | 47.6 | 2.4 | 123.4 | 151.3 | 37.9 | 15.2 | 76.6 | 35.4 | 23.1 | 60.5 |
| | EC ($\mu\text{S}/\text{cm}$) | 25.6 | 28.1 | 32.6 | 33.1 | 59.2 | 20.1 | 31.1 | 52.5 | 45.7 | 25.4 | 46.2 | 69.2 | 31.7 |
| | pH (-) | 5.3 | 5.1 | 5.4 | 4.8 | 6.5 | 5.0 | 4.6 | 4.1 | 5.1 | 4.7 | 5.6 | 5.2 | 4.8 |
| | Cl ⁻ (mg/m ^l) | 67.3 | 98.4 | 76.3 | 143.1 | 12.7 | 151.0 | 248.1 | 148.3 | 26.1 | 123.0 | 97.3 | 157.5 | 141.8 |
| | NO ₃ ⁻ (mg/m ^l) | 184.9 | 103.3 | 59.9 | 127.2 | 0.0 | 403.6 | 268.2 | 201.5 | 34.7 | 159.6 | 158.7 | 141.7 | 204.4 |
| | SO ₄ ²⁻ (mg/m ^l) | 209.2 | 73.5 | 56.4 | 151.2 | 38.0 | 279.9 | 309.8 | 152.3 | 42.5 | 203.1 | 190.3 | 180.3 | 197.2 |
| | Na ⁺ (mg/m ^l) | 53.6 | 21.0 | 16.2 | 103.9 | 52.3 | 149.3 | 156.7 | 87.0 | 126.8 | 81.7 | 50.6 | 67.4 | 93.5 |
| | NH ₄ ⁺ (mg/m ^l) | 84.1 | 33.6 | 60.9 | 90.9 | 13.3 | 53.9 | 159.4 | 98.5 | 25.4 | 99.4 | 84.9 | 55.9 | 87.4 |
| | K ⁺ (mg/m ^l) | 12.8 | 45.3 | 179.4 | 15.1 | 11.4 | 30.8 | 33.1 | 20.7 | 23.8 | 17.4 | 13.5 | 16.9 | 44.6 |
| | Mg ²⁺ (mg/m ^l) | 12.8 | 33.2 | 17.8 | 11.0 | 5.7 | 12.8 | 18.9 | 11.3 | 17.7 | 18.3 | 9.7 | 16.8 | 17.1 |
| | Ca ²⁺ (mg/m ^l) | 76.1 | 22.8 | 21.6 | 22.9 | 24.4 | 27.9 | 34.3 | 25.8 | 64.6 | 64.7 | 51.9 | 64.8 | 38.1 |
| NSS - SO ₄ ²⁻ (mg/m ^l) | 196.8 | 69.0 | 54.1 | 125.4 | 31.7 | 244.4 | 271.7 | 131.3 | 37.9 | 183.8 | 179.0 | 163.9 | 175.5 | |
| NSS - Ca ²⁺ (mg/m ^l) | 74.0 | 22.0 | 21.0 | 19.0 | 22.4 | 22.3 | 28.4 | 22.5 | 59.8 | 61.6 | 50.0 | 62.2 | 34.6 | |
| 鷺敷町 鷺敷中学校 | 降水量 (mm) | 127.2 | 162.3 | 258.8 | 329.4 | 135.0 | 853.2 | 284.4 | 180.9 | 51.5 | 176.1 | 26.0 | 79.1 | 222.0 |
| | EC ($\mu\text{S}/\text{cm}$) | 21.2 | 24.8 | 9.6 | 33.8 | 15.7 | 11.7 | 29.2 | 31.4 | 31.6 | 18.4 | 46.2 | 31.3 | 20.6 |
| | pH (-) | 5.2 | 4.9 | 4.6 | 5.0 | 4.6 | 4.7 | 4.5 | 4.2 | 4.6 | 4.6 | 4.3 | 5.0 | 4.6 |
| | Cl ⁻ (mg/m ^l) | 146.3 | 258.7 | 153.6 | 3360.2 | 202.7 | 753.7 | 632.8 | 201.3 | 310.1 | 90.0 | 36.1 | 132.9 | 802.3 |
| | NO ₃ ⁻ (mg/m ^l) | 205.0 | 109.7 | 159.4 | 608.4 | 295.9 | 634.9 | 195.2 | 443.5 | 168.4 | 130.0 | 109.1 | 196.9 | 395.2 |
| | SO ₄ ²⁻ (mg/m ^l) | 358.6 | 116.4 | 185.1 | 876.8 | 312.8 | 551.3 | 483.5 | 577.2 | 223.3 | 235.4 | 121.0 | 356.2 | 465.5 |
| | Na ⁺ (mg/m ^l) | 100.8 | 40.7 | 16.0 | 1698.3 | 291.8 | 923.3 | 436.4 | 131.9 | 184.5 | 83.6 | 25.2 | 86.8 | 596.8 |
| | NH ₄ ⁺ (mg/m ^l) | 107.8 | 95.2 | 5.7 | 48.5 | 25.7 | 103.5 | 77.1 | 93.9 | 49.4 | 29.4 | 20.3 | 60.5 | 71.5 |
| | K ⁺ (mg/m ^l) | 16.7 | 444.6 | 28.1 | 71.4 | 57.8 | 120.8 | 77.7 | 44.8 | 22.9 | 7.1 | 8.8 | 26.6 | 94.2 |
| | Mg ²⁺ (mg/m ^l) | 22.9 | 60.3 | 11.4 | 170.5 | 16.9 | 79.5 | 49.5 | 20.5 | 34.8 | 15.4 | 9.7 | 32.6 | 62.7 |
| | Ca ²⁺ (mg/m ^l) | 98.0 | 33.5 | 9.4 | 195.0 | 44.8 | 101.8 | 68.3 | 75.6 | 95.7 | 89.6 | 47.1 | 135.5 | 91.3 |
| NSS - SO ₄ ²⁻ (mg/m ^l) | 335.1 | 106.8 | 182.2 | 450.7 | 274.2 | 343.8 | 375.6 | 545.1 | 179.7 | 215.0 | 115.6 | 335.1 | 325.8 | |
| NSS - Ca ²⁺ (mg/m ^l) | 94.1 | 32.0 | 8.8 | 130.5 | 33.8 | 66.7 | 51.7 | 70.6 | 88.7 | 86.5 | 46.2 | 132.2 | 68.6 | |
| 阿南市 阿南保健所 | 降水量 (mm) | 52.9 | 84.6 | 182.5 | 101.5 | 36.6 | 182.3 | 216.9 | 56.7 | 27.6 | 139.2 | 29.1 | 25.8 | 94.6 |
| | EC ($\mu\text{S}/\text{cm}$) | 34.7 | 36.9 | 16.7 | 22.8 | 27.0 | 24.1 | 30.8 | 36.3 | 31.9 | 24.8 | 44.1 | 60.1 | 27.8 |
| | pH (-) | 5.2 | 5.0 | 4.7 | 4.5 | 5.3 | 4.4 | 4.6 | 4.6 | 5.2 | 4.8 | 4.7 | 5.0 | 4.7 |
| | Cl ⁻ (mg/m ^l) | 104.3 | 286.9 | 138.0 | 271.3 | 99.6 | 227.0 | 689.9 | 133.1 | 66.0 | 250.8 | 97.0 | 112.4 | 288.1 |
| | NO ₃ ⁻ (mg/m ^l) | 152.9 | 122.0 | 179.2 | 236.7 | 85.9 | 832.6 | 305.4 | 181.4 | 74.6 | 203.4 | 104.3 | 145.7 | 302.7 |
| | SO ₄ ²⁻ (mg/m ^l) | 210.5 | 84.0 | 206.4 | 277.0 | 121.0 | 340.1 | 517.6 | 213.9 | 102.2 | 335.9 | 131.1 | 196.2 | 293.5 |
| | Na ⁺ (mg/m ^l) | 62.1 | 69.4 | 30.9 | 164.9 | 90.9 | 246.3 | 463.0 | 71.8 | 45.9 | 152.0 | 46.3 | 55.3 | 184.4 |
| | NH ₄ ⁺ (mg/m ^l) | 59.7 | 33.6 | 39.0 | 59.4 | 41.9 | 163.8 | 250.9 | 126.8 | 60.9 | 184.4 | 56.7 | 60.5 | 125.7 |
| | K ⁺ (mg/m ^l) | 10.6 | 60.2 | 57.2 | 11.2 | 21.5 | 58.0 | 78.6 | 26.3 | 10.5 | 20.5 | 5.6 | 19.0 | 44.8 |
| | Mg ²⁺ (mg/m ^l) | 16.4 | 56.4 | 31.7 | 17.3 | 9.7 | 19.7 | 50.5 | 10.5 | 9.6 | 27.5 | 7.8 | 14.4 | 29.4 |
| | Ca ²⁺ (mg/m ^l) | 34.9 | 25.8 | 15.2 | 32.6 | 18.9 | 54.0 | 63.2 | 26.3 | 37.6 | 81.0 | 27.6 | 54.9 | 44.4 |
| NSS - SO ₄ ²⁻ (mg/m ^l) | 195.3 | 67.8 | 199.9 | 237.6 | 100.3 | 281.6 | 403.7 | 196.4 | 94.7 | 298.5 | 120.2 | 183.3 | 249.0 | |
| NSS - Ca ²⁺ (mg/m ^l) | 32.5 | 23.2 | 14.0 | 26.4 | 15.5 | 44.7 | 45.6 | 23.5 | 35.9 | 75.2 | 25.9 | 52.8 | 37.4 | |

平成13年度酸性雨調査結果

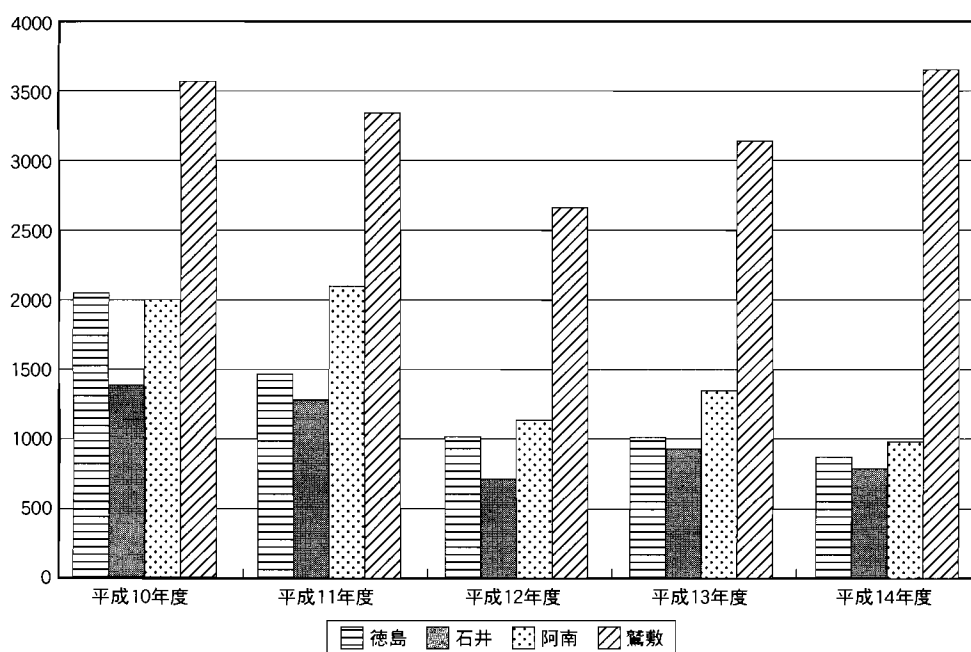
| 調査地点 | 項目 \ 月 | 4月 | 5月 | 6月 | 7月 | 8月 | 9月 | 10月 | 11月 | 12月 | 1月 | 2月 | 3月 | 年間平均 |
|--------------|--|-------|-------|-------|-------|--------|--------|--------|------|-------|-------|-------|--------|--------|
| 徳島市 徳島保健所 | 降水量 (mm) | 44.6 | 83.2 | 93.9 | 86.8 | 136.5 | 161.6 | 237.6 | 7.8 | 28.3 | 86.3 | 11.2 | 41.7 | 85.0 |
| | EC ($\mu\text{S}/\text{cm}$) | 30.3 | 35.4 | 18.1 | 16.3 | 44.2 | 17.6 | 34.1 | 47.5 | 52.1 | 23.1 | 44.0 | 37.7 | 29.7 |
| | pH (-) | 5.2 | 4.5 | 4.5 | 4.2 | 4.3 | 4.3 | 4.3 | 5.8 | 5.0 | 5.0 | 5.2 | 5.4 | 4.4 |
| | Cl ⁻ (mg/㎡) | 27.0 | 127.4 | 40.0 | 36.4 | 882.5 | 186.7 | 929.8 | 77.4 | 89.2 | 158.3 | 22.0 | 147.3 | 405.5 |
| | NO ₃ ⁻ (mg/㎡) | 97.3 | 87.1 | 79.8 | 66.7 | 246.3 | 119.1 | 566.2 | 53.6 | 146.6 | 200.5 | 71.8 | 202.0 | 238.7 |
| | SO ₄ ²⁻ (mg/㎡) | 129.7 | 85.4 | 167.4 | 167.0 | 626.8 | 282.5 | 896.1 | 56.5 | 165.4 | 247.3 | 100.7 | 256.8 | 417.4 |
| | Na ⁺ (mg/㎡) | 10.4 | 48.9 | 28.0 | 33.4 | 294.8 | 64.9 | 302.6 | 23.1 | 38.2 | 71.7 | 12.5 | 760.6 | 168.7 |
| | NH ₄ ⁺ (mg/㎡) | 35.0 | 45.6 | 81.4 | 57.8 | 73.0 | 44.6 | 119.0 | 26.0 | 55.8 | 92.1 | 22.6 | 670.9 | 99.5 |
| | K ⁺ (mg/㎡) | 11.6 | 10.7 | 8.9 | 15.9 | 37.0 | 10.5 | 26.1 | 9.0 | 14.5 | 15.9 | 5.6 | 153.0 | 24.4 |
| | Mg ²⁺ (mg/㎡) | 9.6 | 13.5 | 4.4 | 20.2 | 55.5 | 14.0 | 61.3 | 6.7 | 9.0 | 13.5 | 6.3 | 169.4 | 36.0 |
| | Ca ²⁺ (mg/㎡) | 20.0 | 17.1 | 27.5 | 120.7 | 54.4 | 22.5 | 55.7 | 11.3 | 18.4 | 32.8 | 15.0 | 626.0 | 68.1 |
| | NSS - SO ₄ ²⁻ (mg/㎡) | 127.2 | 73.5 | 161.1 | 160.3 | 552.8 | 266.2 | 820.2 | 50.7 | 156.3 | 229.7 | 98.5 | 66.1 | 375.4 |
| | NSS - Ca ²⁺ (mg/㎡) | 19.6 | 15.2 | 26.5 | 119.5 | 43.2 | 20.0 | 44.2 | 10.4 | 16.9 | 30.1 | 14.5 | 597.1 | 61.6 |
| 石井町 農業大学校 | 降水量 (mm) | 23.7 | 155.9 | 60.7 | 65.3 | 210.4 | 98.6 | 184.1 | 13.2 | 30.5 | 45.4 | 15.9 | 29.7 | 77.8 |
| | EC ($\mu\text{S}/\text{cm}$) | 32.2 | 29.3 | 13.0 | 12.5 | 26.0 | 45.6 | 22.1 | 33.8 | 42.8 | 24.4 | 34.0 | 19.1 | 26.7 |
| | pH (-) | 5.0 | 4.4 | 4.4 | 4.5 | 4.3 | 4.9 | 4.4 | 5.5 | 4.7 | 4.9 | 5.8 | 5.9 | 4.5 |
| | Cl ⁻ (mg/㎡) | 22.3 | 196.6 | 15.3 | 21.4 | 348.8 | 139.8 | 341.9 | 84.0 | 130.7 | 98.4 | 38.4 | 50.8 | 209.2 |
| | NO ₃ ⁻ (mg/㎡) | 71.8 | 68.2 | 75.3 | 50.4 | 275.6 | 125.8 | 291.9 | 63.0 | 160.2 | 126.8 | 76.6 | 70.0 | 170.4 |
| | SO ₄ ²⁻ (mg/㎡) | 53.9 | 282.3 | 66.1 | 80.4 | 597.1 | 169.0 | 459.8 | 60.3 | 150.8 | 117.9 | 89.2 | 76.2 | 317.0 |
| | Na ⁺ (mg/㎡) | 10.2 | 58.5 | 8.5 | 17.2 | 120.8 | 56.8 | 126.6 | 28.3 | 49.1 | 43.8 | 22.2 | 333.2 | 85.1 |
| | NH ₄ ⁺ (mg/㎡) | 35.0 | 86.5 | 47.0 | 48.0 | 66.6 | 35.5 | 46.2 | 13.0 | 35.7 | 31.1 | 21.4 | 245.6 | 60.7 |
| | K ⁺ (mg/㎡) | 10.7 | 21.2 | 10.2 | 14.9 | 26.2 | 15.6 | 17.6 | 10.4 | 14.9 | 15.6 | 11.9 | 127.6 | 22.2 |
| | Mg ²⁺ (mg/㎡) | 6.1 | 16.7 | 2.3 | 3.9 | 25.3 | 12.4 | 27.1 | 6.7 | 10.1 | 7.7 | 5.2 | 75.4 | 19.0 |
| | Ca ²⁺ (mg/㎡) | 16.6 | 31.2 | 11.7 | 17.2 | 30.1 | 19.5 | 30.0 | 7.5 | 19.1 | 13.4 | 6.6 | 271.5 | 32.5 |
| | NSS - SO ₄ ²⁻ (mg/㎡) | 51.4 | 267.6 | 64.0 | 76.7 | 566.7 | 154.8 | 428.0 | 53.2 | 139.1 | 107.4 | 84.8 | -7.5 | 295.8 |
| | NSS - Ca ²⁺ (mg/㎡) | 16.3 | 29.0 | 11.4 | 16.6 | 25.5 | 17.3 | 25.2 | 6.4 | 17.2 | 11.7 | 5.7 | 258.8 | 29.3 |
| 鷺敷町 鷺敷中学校 | 降水量 (mm) | 40.4 | 338.9 | 293.6 | 159.9 | 161.5 | 1194.9 | 547.8 | 12.3 | 62.9 | 214.3 | 23.6 | 93.3 | 262.0 |
| | EC ($\mu\text{S}/\text{cm}$) | 24.4 | 21.1 | 10.7 | 7.5 | 27.8 | 56.7 | 27.4 | 36.1 | 27.0 | 15.6 | 28.4 | 24.3 | 34.4 |
| | pH (-) | 4.4 | 4.5 | 4.7 | 4.9 | 4.2 | 4.8 | 4.3 | 4.6 | 4.4 | 4.7 | 4.4 | 4.6 | 4.6 |
| | Cl ⁻ (mg/㎡) | 17.8 | 399.6 | 52.4 | 24.7 | 156.1 | 1318.9 | 1595.2 | 64.1 | 105.5 | 285.2 | 21.7 | 162.6 | 863.6 |
| | NO ₃ ⁻ (mg/㎡) | 67.4 | 169.6 | 124.1 | 43.0 | 266.2 | 183.6 | 787.3 | 69.5 | 128.8 | 127.9 | 92.9 | 219.7 | 272.4 |
| | SO ₄ ²⁻ (mg/㎡) | 81.0 | 452.0 | 239.3 | 113.6 | 596.9 | 925.4 | 1589.2 | 66.4 | 154.8 | 259.9 | 80.9 | 281.0 | 767.3 |
| | Na ⁺ (mg/㎡) | 16.3 | 269.3 | 49.6 | 26.1 | 54.1 | 471.7 | 509.3 | 22.2 | 40.7 | 115.1 | 9.1 | 995.8 | 344.4 |
| | NH ₄ ⁺ (mg/㎡) | 16.2 | 103.4 | 37.9 | 38.0 | 31.3 | 26.6 | 71.9 | 6.8 | 19.3 | 22.6 | 12.9 | 469.5 | 57.1 |
| | K ⁺ (mg/㎡) | 10.5 | 18.7 | 11.5 | 21.6 | 8.6 | 154.2 | 37.9 | 4.3 | 5.6 | 8.7 | 3.3 | 111.9 | 74.1 |
| | Mg ²⁺ (mg/㎡) | 6.1 | 32.3 | 5.9 | 5.1 | 10.1 | 93.4 | 101.2 | 5.5 | 7.8 | 17.9 | 3.5 | 212.1 | 65.8 |
| | Ca ²⁺ (mg/㎡) | 22.9 | 50.0 | 36.3 | 21.2 | 20.3 | 58.1 | 72.3 | 12.0 | 11.8 | 18.0 | 8.7 | 747.1 | 69.6 |
| | NSS - SO ₄ ²⁻ (mg/㎡) | 76.9 | 384.8 | 226.8 | 107.1 | 583.3 | 807.3 | 1461.4 | 60.9 | 145.7 | 232.2 | 78.6 | 31.1 | 681.1 |
| | NSS - Ca ²⁺ (mg/㎡) | 22.3 | 39.8 | 34.4 | 20.2 | 18.2 | 40.2 | 53.0 | 11.1 | 10.2 | 13.7 | 8.3 | 709.3 | 56.6 |
| 阿南市 阿南保健所 | 降水量 (mm) | 44.7 | 211.1 | 173.4 | 54.4 | 255.6 | 175.6 | 200.6 | 6.4 | 30.7 | 114.3 | 14.0 | 77.4 | 113.2 |
| | EC ($\mu\text{S}/\text{cm}$) | 41.7 | 32.0 | 14.9 | 19.3 | 53.1 | 28.8 | 33.7 | 21.6 | 45.5 | 23.8 | 33.8 | 29.2 | 32.9 |
| | pH (-) | 4.6 | 4.3 | 4.6 | 5.0 | 4.3 | 4.2 | 4.4 | 5.9 | 6.2 | 4.9 | 4.6 | 4.7 | 4.4 |
| | Cl ⁻ (mg/㎡) | 54.1 | 385.8 | 103.0 | 62.5 | 3837.1 | 602.3 | 1204.5 | 29.9 | 150.8 | 384.8 | 20.5 | 300.4 | 1108.5 |
| | NO ₃ ⁻ (mg/㎡) | 99.4 | 253.3 | 139.3 | 61.3 | 374.6 | 194.1 | 409.6 | 16.2 | 103.9 | 135.9 | 71.2 | 179.5 | 243.8 |
| | SO ₄ ²⁻ (mg/㎡) | 213.0 | 449.4 | 222.0 | 100.4 | 1320.1 | 619.6 | 734.0 | 15.6 | 159.5 | 245.0 | 86.6 | 279.3 | 587.3 |
| | Na ⁺ (mg/㎡) | 25.3 | 206.9 | 69.2 | 42.7 | 1094.2 | 232.8 | 399.8 | 12.6 | 53.6 | 144.1 | 14.8 | 1745.6 | 451.6 |
| | NH ₄ ⁺ (mg/㎡) | 82.6 | 142.2 | 67.8 | 60.4 | 63.4 | 24.3 | 51.0 | 3.8 | 14.5 | 37.0 | 15.5 | 411.5 | 85.6 |
| | K ⁺ (mg/㎡) | 15.0 | 22.2 | 13.9 | 20.6 | 87.1 | 25.7 | 32.4 | 6.3 | 12.1 | 16.6 | 8.5 | 190.5 | 43.7 |
| | Mg ²⁺ (mg/㎡) | 11.0 | 32.7 | 8.8 | 8.7 | 221.5 | 45.2 | 82.7 | 4.0 | 14.7 | 25.6 | 6.5 | 409.1 | 92.5 |
| | Ca ²⁺ (mg/㎡) | 38.7 | 47.8 | 38.3 | 28.0 | 118.3 | 36.3 | 58.6 | 11.9 | 102.0 | 38.2 | 17.3 | 559.5 | 88.0 |
| | NSS - SO ₄ ²⁻ (mg/㎡) | 207.0 | 397.8 | 204.6 | 90.4 | 1045.5 | 561.1 | 633.6 | 12.9 | 146.5 | 209.1 | 84.1 | -157.2 | 474.1 |
| | NSS - Ca ²⁺ (mg/㎡) | 37.7 | 40.0 | 35.6 | 26.3 | 76.7 | 27.5 | 43.4 | 11.4 | 99.9 | 32.7 | 16.7 | 493.1 | 70.8 |

平成14年度酸性雨調査結果

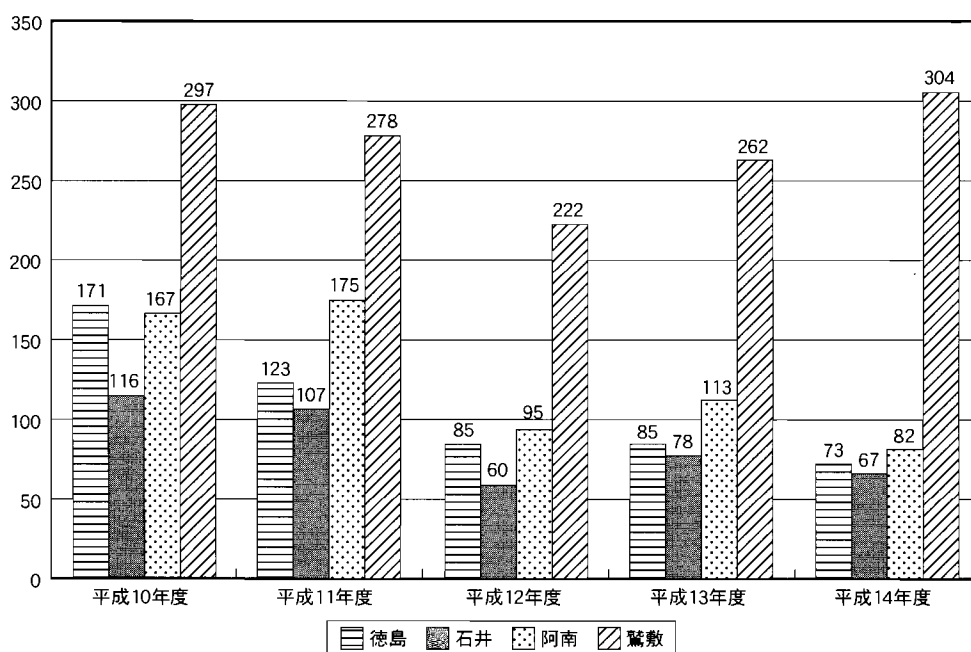
| 調査地点 | 項目 \ 月 | 4月 | 5月 | 6月 | 7月 | 8月 | 9月 | 10月 | 11月 | 12月 | 1月 | 2月 | 3月 | 年間平均 |
|---|--|-------|-------|-------|--------|--------|-------|-------|-------|-------|-------|-------|-------|--------|
| 徳島市 徳島保健所 | 降水量 (mm) | 63.6 | 80.3 | 118.2 | 105.7 | 56.1 | 81.4 | 57.9 | 29.5 | 95.3 | 52.7 | 52.2 | 84.1 | 73.1 |
| | EC ($\mu\text{S}/\text{cm}$) | 34.2 | 31.6 | 32.5 | 31.9 | 60.3 | 31.5 | 38.7 | 44.9 | 22.9 | 35.2 | 35.2 | 31.2 | 34.1 |
| | pH (-) | 4.7 | 4.3 | 4.2 | 4.5 | 4.2 | 4.3 | 4.3 | 5.3 | 5.1 | 4.4 | 5.1 | 4.6 | 4.4 |
| | Cl ⁻ (mg/m ^l) | 191.3 | 48.5 | 140.4 | 492.8 | 509.4 | 114.1 | 114.4 | 118.7 | 160.4 | 225.2 | 89.5 | 120.5 | 199.2 |
| | NO ₃ ⁻ (mg/m ^l) | 236.7 | 316.4 | 296.8 | 96.5 | 147.0 | 308.5 | 285.5 | 189.0 | 168.0 | 115.8 | 185.9 | 200.2 | 216.5 |
| | SO ₄ ²⁻ (mg/m ^l) | 275.2 | 311.5 | 431.9 | 247.7 | 315.1 | 276.9 | 211.3 | 171.1 | 244.6 | 158.0 | 240.6 | 254.6 | 276.9 |
| | Na ⁺ (mg/m ^l) | 111.9 | 38.3 | 93.5 | 270.7 | 281.4 | 80.9 | 48.5 | 46.2 | 84.3 | 105.4 | 41.6 | 67.6 | 111.6 |
| | NH ₄ ⁺ (mg/m ^l) | 105.2 | 99.0 | 130.1 | 62.2 | 68.8 | 109.6 | 106.8 | 76.7 | 124.8 | 67.1 | 105.2 | 103.0 | 99.7 |
| | K ⁺ (mg/m ^l) | 23.1 | 14.7 | 15.0 | 15.9 | 20.0 | 16.8 | 9.2 | 11.7 | 14.3 | 8.8 | 17.2 | 17.4 | 15.6 |
| | Mg ²⁺ (mg/m ^l) | 22.1 | 8.0 | 12.8 | 30.8 | 34.8 | 12.7 | 9.2 | 10.6 | 14.8 | 17.7 | 12.2 | 15.8 | 17.1 |
| | Ca ²⁺ (mg/m ^l) | 67.3 | 33.3 | 49.2 | 40.9 | 59.3 | 57.7 | 37.2 | 63.8 | 52.8 | 43.4 | 59.3 | 49.1 | 49.8 |
| | NSS - SO ₄ ²⁻ (mg/m ^l) | 248.4 | 303.0 | 409.4 | 180.5 | 245.0 | 257.5 | 199.9 | 160.3 | 224.1 | 133.0 | 230.9 | 237.8 | 249.7 |
| NSS - Ca ²⁺ (mg/m ^l) | 63.1 | 31.8 | 45.7 | 30.6 | 48.7 | 54.6 | 35.3 | 62.1 | 49.6 | 39.4 | 57.8 | 46.5 | 45.6 | |
| 石井町 農業大学校 | 降水量 (mm) | 53.0 | 104.4 | 72.0 | 121.2 | 99.4 | 50.5 | 54.6 | 19.5 | 88.4 | 30.6 | 34.2 | 81.4 | 67.4 |
| | EC ($\mu\text{S}/\text{cm}$) | 26.7 | 23.0 | 21.5 | 18.2 | 30.4 | 22.8 | 36.6 | 44.9 | 20.6 | 32.1 | 37.7 | 30.8 | 26.2 |
| | pH (-) | 5.8 | 4.4 | 4.6 | 4.9 | 4.3 | 4.3 | 4.2 | 5.3 | 4.5 | 4.8 | 5.0 | 4.6 | 4.5 |
| | Cl ⁻ (mg/m ^l) | 82.9 | 30.8 | 42.2 | 183.9 | 402.7 | 38.1 | 127.6 | 98.1 | 133.8 | 82.7 | 65.7 | 84.9 | 132.6 |
| | NO ₃ ⁻ (mg/m ^l) | 153.7 | 253.1 | 160.6 | 92.5 | 96.2 | 143.6 | 221.5 | 123.5 | 141.5 | 61.9 | 139.4 | 252.9 | 158.7 |
| | SO ₄ ²⁻ (mg/m ^l) | 148.5 | 253.6 | 169.7 | 168.7 | 213.0 | 97.1 | 158.7 | 106.1 | 153.8 | 54.4 | 138.9 | 250.4 | 178.2 |
| | Na ⁺ (mg/m ^l) | 61.8 | 31.1 | 40.7 | 119.1 | 243.3 | 39.3 | 60.9 | 40.4 | 72.4 | 44.5 | 39.8 | 52.2 | 83.5 |
| | NH ₄ ⁺ (mg/m ^l) | 84.7 | 74.4 | 68.3 | 102.9 | 23.0 | 39.0 | 62.6 | 38.7 | 64.3 | 26.2 | 72.8 | 107.5 | 69.0 |
| | K ⁺ (mg/m ^l) | 35.5 | 12.5 | 20.3 | 26.2 | 16.5 | 10.8 | 13.1 | 10.2 | 13.3 | 6.7 | 21.8 | 23.5 | 18.5 |
| | Mg ²⁺ (mg/m ^l) | 14.4 | 5.3 | 6.8 | 15.1 | 27.2 | 5.6 | 10.3 | 10.0 | 13.1 | 7.5 | 7.9 | 11.9 | 12.4 |
| | Ca ²⁺ (mg/m ^l) | 41.7 | 21.9 | 27.4 | 34.5 | 32.9 | 21.7 | 26.3 | 47.2 | 34.5 | 12.9 | 30.8 | 40.2 | 31.1 |
| | NSS - SO ₄ ²⁻ (mg/m ^l) | 133.9 | 247.1 | 160.5 | 139.6 | 152.4 | 88.1 | 144.1 | 96.4 | 136.3 | 44.0 | 130.3 | 237.6 | 158.1 |
| NSS - Ca ²⁺ (mg/m ^l) | 39.4 | 20.7 | 25.9 | 30.0 | 23.6 | 20.2 | 24.0 | 45.7 | 31.7 | 11.3 | 29.3 | 38.2 | 27.9 | |
| 鷺敷町 鷺敷中学校 | 降水量 (mm) | 239.3 | 352.1 | 486.3 | 594.7 | 777.7 | 435.0 | 123.2 | 41.8 | 181.8 | 97.1 | 136.8 | 177.7 | 303.6 |
| | EC ($\mu\text{S}/\text{cm}$) | 35.8 | 20.5 | 11.4 | 25.2 | 21.2 | 16.0 | 11.9 | 24.4 | 14.1 | 18.9 | 19.7 | 25.8 | 20.3 |
| | pH (-) | 4.2 | 4.3 | 4.6 | 4.6 | 4.4 | 4.3 | 4.5 | 4.4 | 4.5 | 4.4 | 4.6 | 4.2 | 4.4 |
| | Cl ⁻ (mg/m ^l) | 933.0 | 169.6 | 196.0 | 2605.9 | 2356.4 | 340.3 | 54.7 | 66.6 | 115.3 | 101.6 | 100.8 | 172.7 | 1096.0 |
| | NO ₃ ⁻ (mg/m ^l) | 401.3 | 552.2 | 231.1 | 265.7 | 326.0 | 493.4 | 135.8 | 136.6 | 184.3 | 108.2 | 298.4 | 437.6 | 333.2 |
| | SO ₄ ²⁻ (mg/m ^l) | 795.6 | 764.3 | 469.8 | 791.0 | 1163.6 | 605.7 | 109.7 | 98.0 | 164.9 | 103.2 | 271.4 | 495.7 | 688.8 |
| | Na ⁺ (mg/m ^l) | 513.5 | 66.6 | 137.1 | 1478.9 | 1330.5 | 145.3 | 27.1 | 25.9 | 56.9 | 52.1 | 42.3 | 107.1 | 613.4 |
| | NH ₄ ⁺ (mg/m ^l) | 50.5 | 101.3 | 67.4 | 48.7 | 65.3 | 113.1 | 14.7 | 24.4 | 30.9 | 21.6 | 59.7 | 89.8 | 67.0 |
| | K ⁺ (mg/m ^l) | 31.2 | 20.9 | 15.2 | 63.8 | 62.1 | 21.9 | 12.8 | 6.7 | 8.6 | 5.5 | 17.7 | 21.2 | 35.2 |
| | Mg ²⁺ (mg/m ^l) | 61.1 | 8.5 | 11.7 | 156.2 | 151.4 | 16.1 | 5.9 | 7.3 | 11.1 | 9.4 | 17.0 | 25.2 | 69.1 |
| | Ca ²⁺ (mg/m ^l) | 70.2 | 34.9 | 25.6 | 113.3 | 94.2 | 48.8 | 25.9 | 54.2 | 47.1 | 22.2 | 133.7 | 120.5 | 71.2 |
| | NSS - SO ₄ ²⁻ (mg/m ^l) | 667.5 | 749.1 | 436.7 | 421.2 | 830.4 | 570.0 | 103.6 | 92.0 | 150.9 | 90.2 | 261.1 | 468.9 | 535.7 |
| NSS - Ca ²⁺ (mg/m ^l) | 50.7 | 32.4 | 20.4 | 57.1 | 43.6 | 43.3 | 24.9 | 53.2 | 44.9 | 20.2 | 132.1 | 116.4 | 47.8 | |
| 阿南市 阿南保健所 | 降水量 (mm) | 90.1 | 111.9 | 97.8 | 80.6 | 98.7 | 86.4 | 58.4 | 18.0 | 99.8 | 99.0 | 62.9 | 80.2 | 82.0 |
| | EC ($\mu\text{S}/\text{cm}$) | 32.1 | 28.0 | 21.8 | 28.7 | 29.3 | 29.8 | 28.1 | 41.2 | 18.5 | 38.6 | 24.3 | 40.7 | 29.3 |
| | pH (-) | 4.7 | 4.4 | 4.7 | 4.7 | 4.5 | 4.3 | 4.2 | 4.9 | 4.9 | 4.8 | 4.8 | 4.7 | 4.5 |
| | Cl ⁻ (mg/m ^l) | 342.2 | 84.4 | 211.0 | 451.6 | 457.0 | 270.4 | 76.6 | 20.9 | 171.0 | 691.1 | 99.8 | 281.1 | 289.6 |
| | NO ₃ ⁻ (mg/m ^l) | 242.2 | 302.6 | 139.4 | 61.6 | 80.4 | 165.0 | 170.5 | 70.5 | 133.8 | 149.3 | 145.9 | 291.0 | 171.1 |
| | SO ₄ ²⁻ (mg/m ^l) | 389.1 | 356.9 | 167.0 | 181.7 | 231.6 | 240.0 | 153.6 | 69.8 | 159.5 | 251.1 | 161.2 | 337.4 | 241.7 |
| | Na ⁺ (mg/m ^l) | 195.3 | 70.7 | 135.2 | 240.2 | 268.2 | 167.6 | 47.9 | 33.7 | 91.3 | 313.8 | 55.4 | 149.6 | 160.7 |
| | NH ₄ ⁺ (mg/m ^l) | 60.7 | 87.2 | 42.1 | 27.9 | 30.9 | 52.1 | 49.6 | 36.1 | 67.9 | 65.0 | 66.8 | 94.4 | 58.6 |
| | K ⁺ (mg/m ^l) | 28.6 | 18.1 | 14.2 | 15.5 | 17.2 | 19.4 | 9.9 | 8.3 | 14.6 | 22.8 | 11.0 | 24.8 | 18.0 |
| | Mg ²⁺ (mg/m ^l) | 31.8 | 9.3 | 15.8 | 27.2 | 29.9 | 19.3 | 7.9 | 7.6 | 16.9 | 48.5 | 10.6 | 30.4 | 22.8 |
| | Ca ²⁺ (mg/m ^l) | 75.7 | 35.7 | 38.2 | 32.0 | 38.3 | 38.2 | 22.6 | 40.2 | 58.9 | 85.8 | 58.1 | 125.8 | 55.3 |
| | NSS - SO ₄ ²⁻ (mg/m ^l) | 341.0 | 339.9 | 135.0 | 122.7 | 164.9 | 198.9 | 142.4 | 62.7 | 137.2 | 172.4 | 148.3 | 300.3 | 202.2 |
| NSS - Ca ²⁺ (mg/m ^l) | 68.3 | 33.0 | 33.1 | 22.9 | 28.1 | 31.8 | 20.7 | 38.9 | 55.4 | 73.9 | 56.0 | 120.1 | 49.2 | |

別表-3 NSS- SO_4^{2-} / SO_4^{2-} とNSS- Ca^{2+} / Ca^{2+} の比率(%)

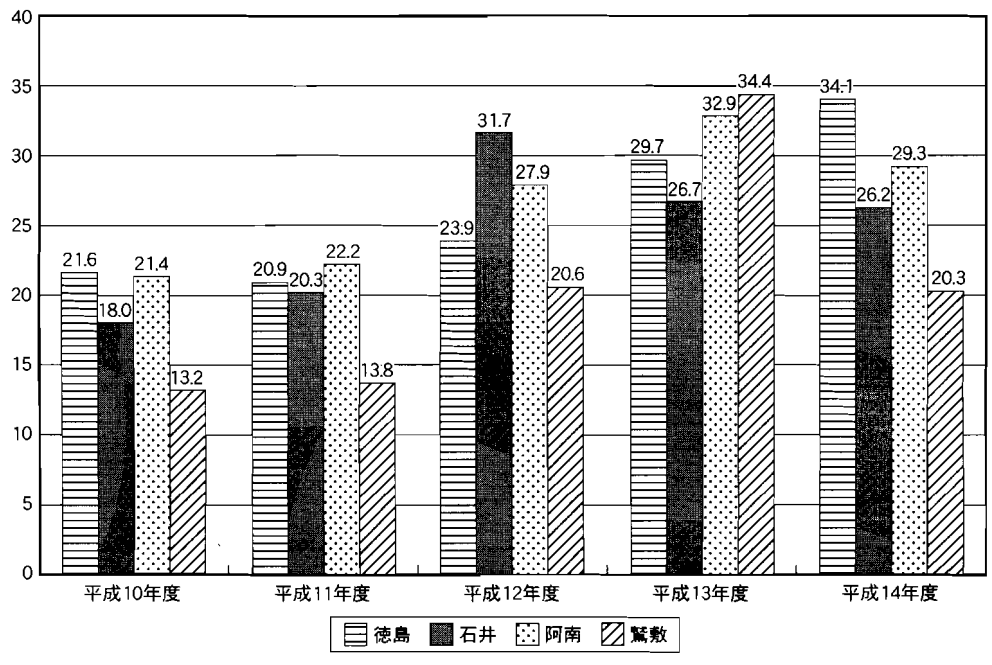
| | NSS- SO_4^{2-} / SO_4^{2-} | | | | | |
|----|--|--------|--------|--------|--------|----|
| | 平成10年度 | 平成11年度 | 平成12年度 | 平成13年度 | 平成14年度 | 平均 |
| 徳島 | 79 | 81 | 81 | 90 | 90 | 84 |
| 石井 | 88 | 79 | 89 | 93 | 89 | 88 |
| 阿南 | 72 | 76 | 85 | 82 | 84 | 80 |
| 鷺敷 | 76 | 73 | 70 | 89 | 78 | 77 |
| | NSS- Ca^{2+} / Ca^{2+} | | | | | |
| | 平成10年度 | 平成11年度 | 平成12年度 | 平成13年度 | 平成14年度 | 平均 |
| 徳島 | 88 | 87 | 87 | 90 | 92 | 89 |
| 石井 | 96 | 93 | 91 | 90 | 90 | 92 |
| 阿南 | 77 | 95 | 84 | 77 | 89 | 84 |
| 鷺敷 | 90 | 93 | 75 | 86 | 67 | 82 |



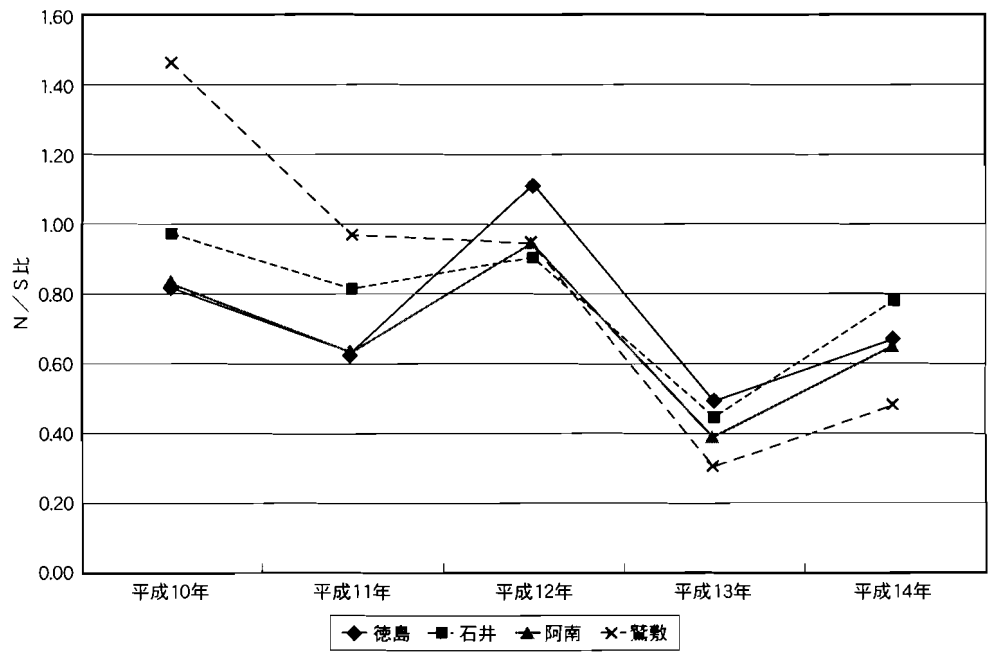
別図-1 年度別年間降水量 (mm/年)



別図-2 年度別月平均降水量 (mm/月)



別図-3 年度別月平均 EC (μs/cm)



別図-4 N/S比の経年変化